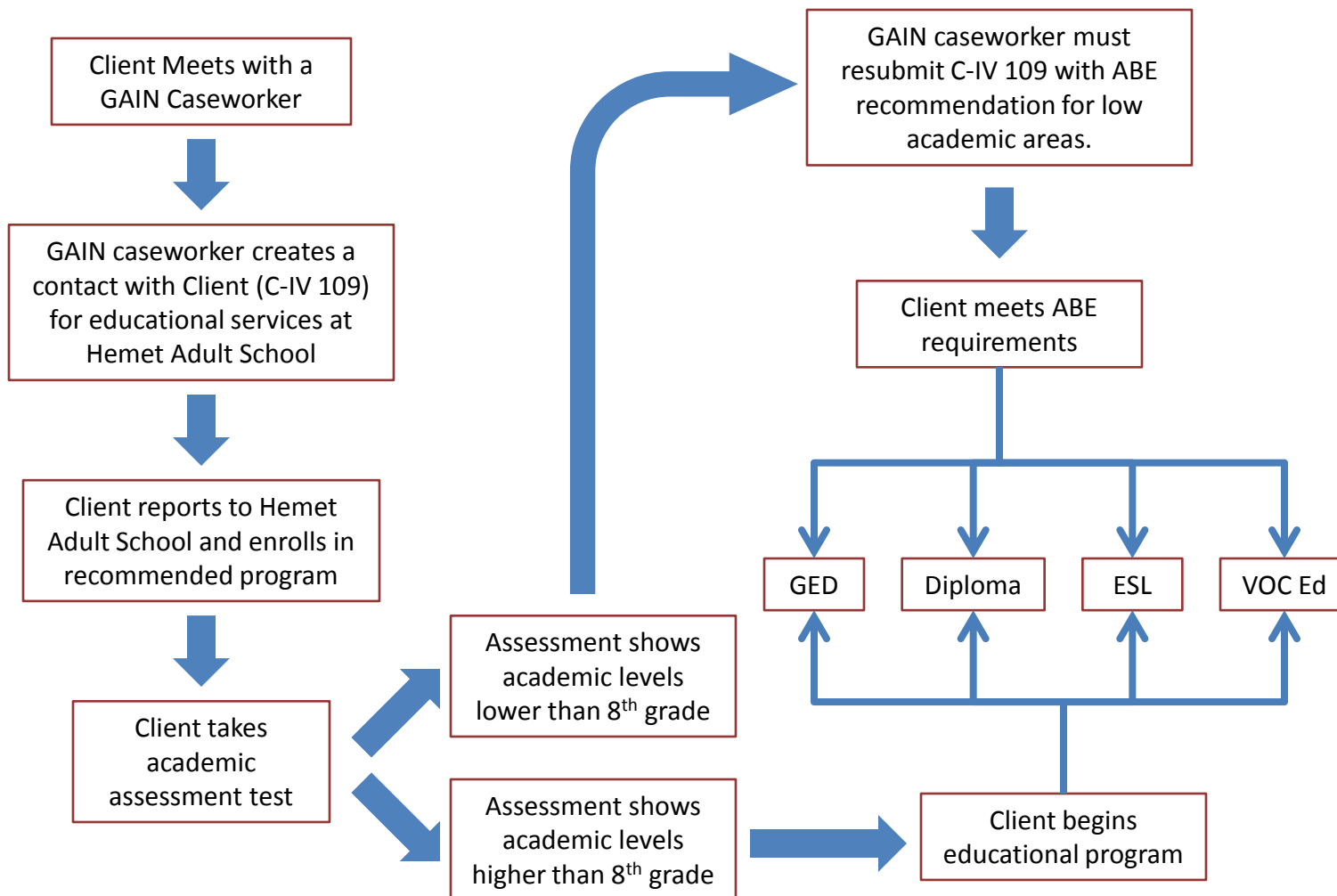


Hemet Adult School

GAIN Referral Process



Clients' contracts are closed when:

1. The client successfully completes the recommended program
2. The client is dropped from the adult education program for lack of attendance (10 consecutive days)
3. A GAIN caseworker terminates the C-IV 109 for any reason
4. The client's educational program has been changed by a GAIN caseworker

Assessment Tools Used at Hemet Adult School

1. **TABE** (Test for Adult Basic Education & provides a grade level placement)
2. **CASAS Reading and Math** (provides a grade level placement)
3. **CASAS Listening & Speaking** (administered to ESL participants)
4. **GED Pretest** (mini GED test which provides an accurate prediction of performance on the complete GED Battery)